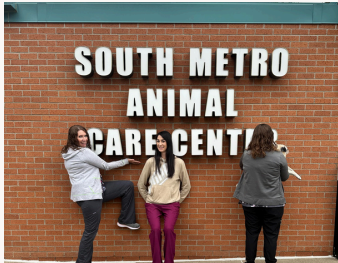




SOUTH METRO ER CHRONICLES



Welcome to our Newsletter

At South Metro Animal Emergency Care, we understand that emergencies can happen at any time, and your pets deserve the best care when they need it most. This newsletter is here to keep you informed, prepared, and connected to the team you can trust.

In each issue, you'll find expert tips on pet safety, real stories of recovery, updates from our emergency team, and resources to help you keep your furry friends happy and healthy. When it comes to your pet's health, every second counts—and we're always here for you. Thank you for being part of our community. Together, we'll make sure every tail wags another day!



We are ALWAYS here.

We are open 24/7, 365 days a year.

That means when you need us most – days, nights, weekends, and holidays – we're here for you and your furry friend.



Meet our Team

Dr. David Lindquist, Medical Director

David Lindquist, DVM, received his undergraduate degree from the University of Chicago in 1991. He then graduated from the University of Wisconsin - Madison, School of Veterinary Medicine, in 1995. David lives with his wife, 3 daughters and 2 dogs. He enjoys reading, gardening, being a volunteer driver for the VA Hospital and an active member at the Roberts Lions Club.

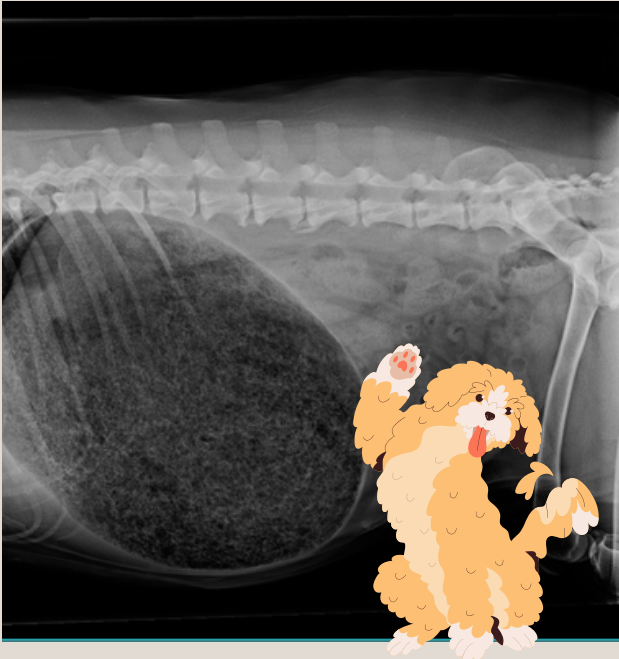


Nicolina Sciarretta, Hospital Administrator

Nicolina joined our team in July of 2023. She has worked in the field of veterinary medicine since 2017. She graduated with a Bachelor of Science degree in Biology from Temple University. She has 2 dogs, Leo and Margana, and a long haired cat named Pineapple Chunk. In her free time she likes to hike with her husband and dogs or spend time with friends.

CRITICAL TAILS

Meet Nanna,



Nanna is a 9-year-old Goldendoodle that ingested 2-3 cups of bread dough, an hour and a half before presentation to the clinic. We were able to pass a thin, flexible tube through her mouth into her stomach (orogastric tube) and retrieve the dough safely. Why is bread dough bad for dogs? The yeast in the dough ferments and expands inside the stomach. This can lead to bloat (Gastric Dilatation-Volvulus, GDV) which is a life-threatening condition for dogs.



How we give back:

Throughout the year, we hold pet food and supply drives. The items we collect are donated to community rescues and organizations.

We are always accepting items at our clinic drop-off: 14960 Pennock Ave, Apple Valley, MN 55124



**Print this for your fridge, in
case of an Emergency!**

Need to find us?

Scan the QR code or use our address in your GPS

14690 Pennock Ave Apple Valley, MN 55124



Follow us on Facebook

Give us a call if you're coming in
952-953-3737



www.smaec.com  **952-953-3737**